

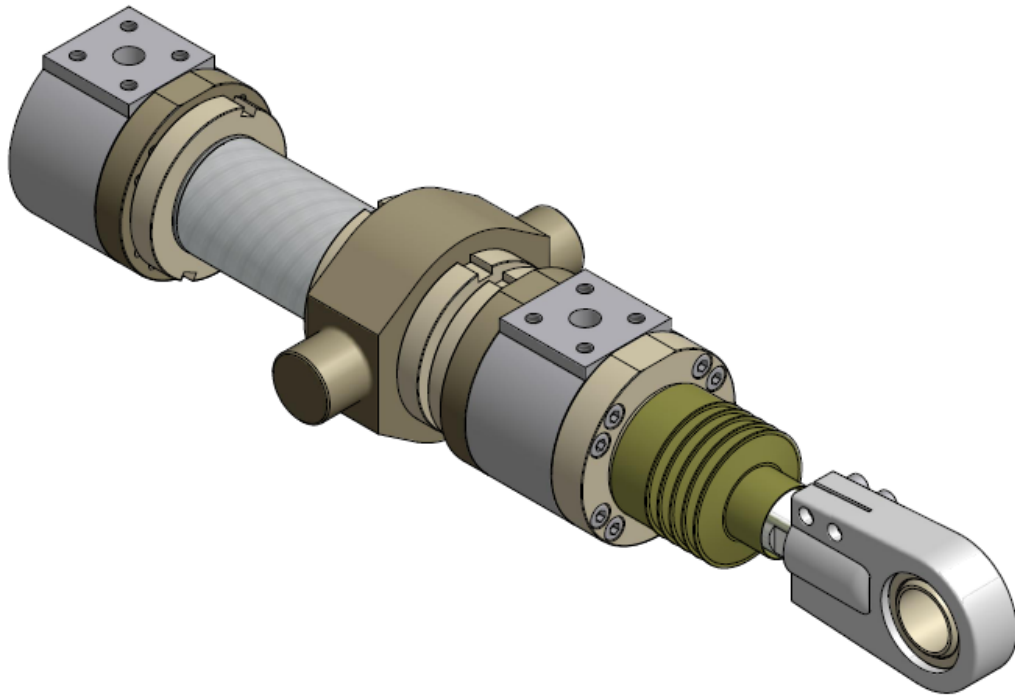
## HYDRAULIC CYLINDER “SC-050/036-200-M025”

Production Report For Mechanical Maintenance



Job.Stock 1828

## *Hydraulic Cylinder “SC-050/036-200-M025”*



### *Hydraulic Cylinder 050x036x200*

Bore size: **Ø50 mm.**

Rod size: **Ø36 mm.**

Stroke: **200 mm.**

Working Pressure: **140 Bar**

SR No. : -

Job No. : **Stock 1828 (No.1-3)**

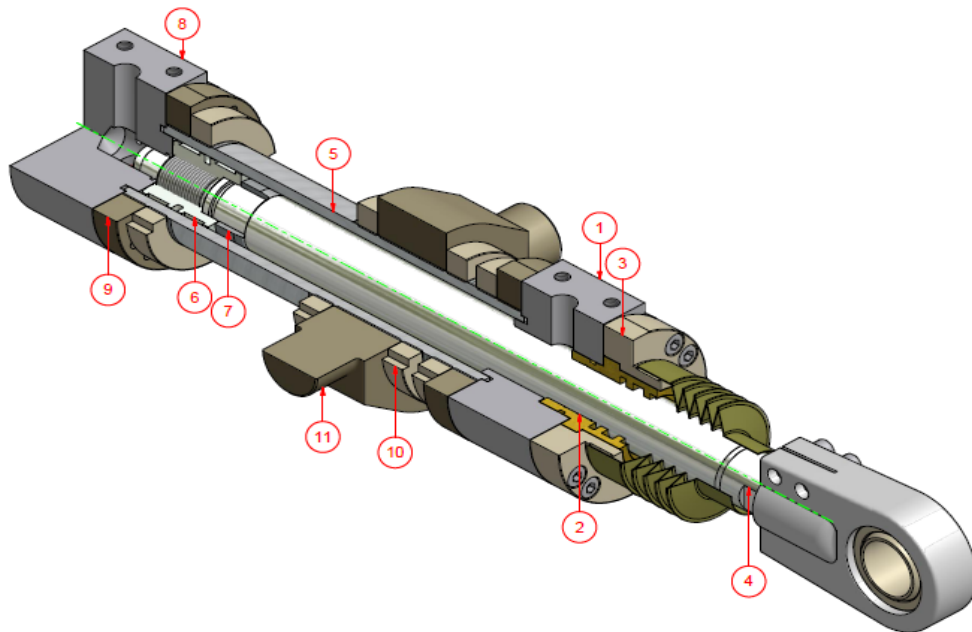


### **Siam Hydraulic Co.,Ltd.**

888 Lasalle Road, Bangna Tai, Bangna, Bangkok 10260

Tel./Fax. 02-399 0939 E-mail : Sale1@siamhyd.com, website : www.siamhyd.com

## SC-050/036-200-M025



### Part List SC-050/036-200-M025

ITEM	P/N	QTY	PART NAME
1	SP-M025-01-01	1	HEAD CYLINDER
2	SP-M025-01-02	1	GLAND
3	SP-M025-01-03	1	FRONT COVER
4	SP-M025-02-01	1	ROD
5	SP-M025-03-01	1	TUBE CYLINDER
6	SP-M025-04-01	1	PISTON
7	SP-M025-04-02	1	CUSHION SLEEVE
8	SP-M025-05-01	1	END CYLINDER
9	SP-M025-06-01	2	FLANGE TUBE
10	SP-M025-06-02	4	LOCKING RING
11	SP-M025-06-03	1	TRUNNION

## รูปชิ้นส่วนที่ผลิต (Job.Stock 1828)

---



Head Cylinder



Gland

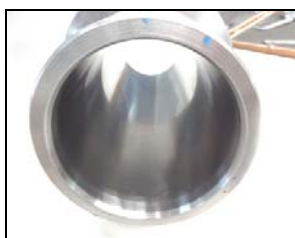


Front Cover



Rod

---



Tube Cylinder



Piston



Cushion Sleeve



End Cylinder

---



Flange Tube



Locking Ring



Trunnion



Rod Eye Mounting

---



Screw Set



Cushion Valve



Seal Kit



Bellow

---

## ภาพการประกอบ และ ทดสอบ Hydraulic Test (Job.Stock 1828)



### HYDRAULIC TEST REPORT

CUSTOMER NAME:

PROJECT NO.: SC-050/036-200-M025

TYPE: 50x36x200

REF. P/O NO. : -

DATE: -

QUOTATION NO. :-

DATE: -

QUALITY: 3 Set

DELIVERY DATE: -

### TEST PRESSURE

WORKING PRESSURE: 140 Bar

MAXIMUM TEST: 250 Bar

TESTING TIME: 30 Minute

TEST BY .....  
SERVICES TECHNICIAN

INSPECTION BY .....  
ENGINEER

SIAM HYD

**Siam Hydraulic Co.,Ltd**

High quality cylinders for heavy duty application